

## **Field Feature Bill of Material**

**PN 43P1299**

### **Installation of 3746 Extended Functions 6 (FC 5813) on IBM 3746 Model 9X0.**

Written by: M. Ardisson  
Checked by: J. Combes  
Approved by: D. Esteve  
Reviewed by: A. Bowen

3746 FFBM	PN 43P1299 1 of 12	EC H60001 17 OCT 2001				
--------------	-----------------------	--------------------------	--	--	--	--



## Before Installation (Steps 1-8)

### 1.0 Machines Affected

IBM 3746 Model 9X0.

*This feature should only be applied on the machine serial for which it is specified.*

### 2.0 Related BMs and ECs

#### 2.1 Prerequisites

(Must be installed prior to this installation)

- Service Processor must be Type 3 (EC F70078), or Type 4 (EC F70110), or upgrade to Type 3 or 4.
- Microcode Level must be EC H10030 or H10040.

**Note:** Refer to Step 2.2 for displaying the level of code.

- FC 5810 or 5811, **and** FC 5812 must be installed.

#### 2.2 Displaying the Level of Code Installed

1. On **MOSS-E View** window, click on **help**.
2. On **Help** window, click on **About**
3. On the **MOSS-E View About** window, click on **Licenced Internal Code**. On the window obtained the code EC number is displayed.
4. Click on **Close**, then **OK** to leave the function.

#### 2.3 Concurrent ECs

(Must be installed together)

None.

#### 2.4 Companion ECs

(May be installed together)

None.

3746 FFBM	PN 43P1299 3 of 12	EC H60001 17 OCT 2001				
--------------	-----------------------	--------------------------	--	--	--	--

## 3.0 BMs to be Installed

Feature BM	Feature Name
43P1299	3746 Extended Functions 6 (FC 5813)

## 4.0 Preparation

1. Familiarize yourself with the purpose and details of the installation instruction before negotiating machine time with the customer.
2. Verify that the password sheet - Form (PN 43P1297) is received and provides the password needed to enable the software feature.
3. Obtain the Service Processor Maintenance Password from the customer.

## 5.0 Programming

### 3746 Models 900 and 950 have a new requirement on NCP.

For compatibility with current reporting of 3746-900 statistics to NPM, the newly available Licensed Internal Code (H10030) requires NCP Version 7 Release 3, or later, with APAR IR46303 (MVS/VM) or IR46304 (VSE). The NCP APAR must be applied before the installation of the new Licensed Internal Code. Otherwise, the reporting of all statistics related to 3746-900 resources controlled by NCP will be interrupted.

### 3746 Models 900 and 950 have a new requirement on NPM.

The newly available Licensed Internal Code (H10030) requires:

- For the reporting of active PU counts per TIC3
  - NPM Version 2 Release 4 with APAR OW37743 (PTF UW59877) at a minimum.
- For NNP utilization reporting to NPM:
  - NPM Version 2 Release 4, Release 5, or Release 6, with APAR number OW49510.
- For reporting to NPM of adapter processor utilizations via NNP
  - NPM Version 2 Release 4, Release 5, or Release 6, with APAR number OW47153.

## 6.0 Purpose and Description

These instructions allow you to install Extended Functions 6 on a 3746 with FC 5810 or FC 5811, **and** FC 5812 installed.

## 7.0 Installation Time

FFBM	Machine Hrs.	System Hrs.	Nbr of CEs
43P1299	0.5	0.0	1

## 8.0 Tools/Material Required

None.

## Installation (Steps 9-12)

### 9.0 Safety

Not applicable.

### 10.0 Details of Installation.

- \_\_\_ Ensure that 3746-9x0 is powered ON and IML'ed.
- \_\_\_ Ask the Customer to stop the traffic on the 3746-9x0.

#### 10.1 Unlocking the Extended Functions 6

- \_\_\_ 1. If not already logged, enter the **Service Processor Maintenance Password** (Default is IBM3745).
- \_\_\_ 2. Double click on the **Service Processor** object icon.
- \_\_\_ 3. Click on **Configuration Management**.
- \_\_\_ 4. Double click on **Manage 3745/3746-9x0 Installation/Removal**

- 5. On the Controller Installation menu: Click on the 3746-950 or the 3746-900NN, on which the feature should be installed, then Click on **Select Feature** button.

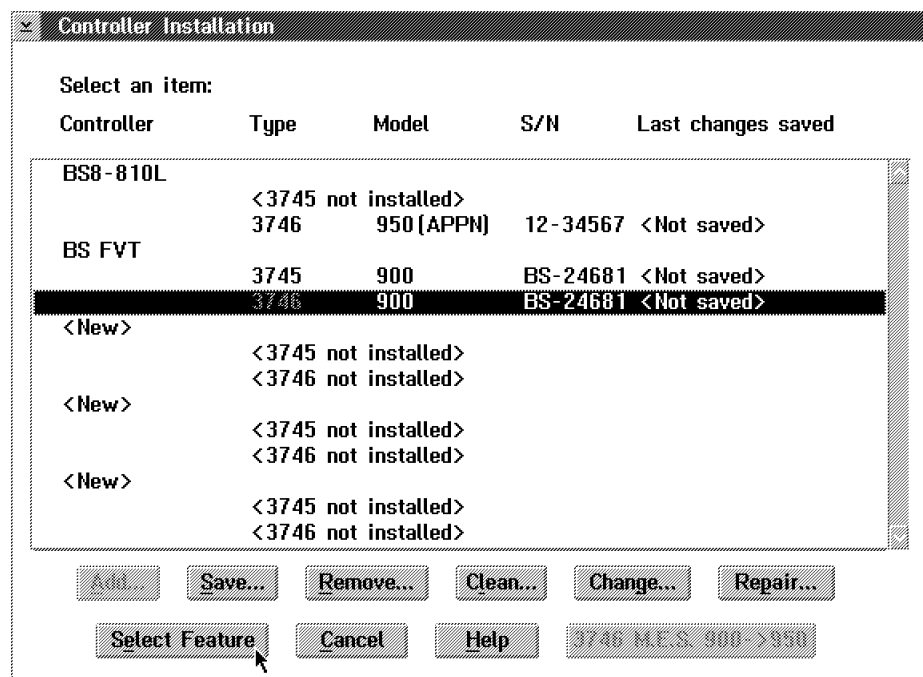


Figure 1. Controller Installation

- \_\_\_ 6. On the **Features Selection** display:
  - \_\_\_ a. Click on the **Extended Functions 6 (FC 5813)** selection box.
  - \_\_\_ b. Enter the corresponding password (The password is recorded on the form - PN 43P1297).
  - \_\_\_ c. Click on **OK** button.

Features	Password	Extended Functions	Password
<input checked="" type="checkbox"/> APPN/HPR	no password	<input type="checkbox"/> 3746 (FC.5800)	
<input checked="" type="checkbox"/> IP	XXXXXXXX	<input type="checkbox"/> MAE (FC.5804)	
<input type="checkbox"/> X.25		<input type="checkbox"/> TN3270E Server (FC.5806)	
<input type="checkbox"/> ISDN	no password	<input type="checkbox"/> 3746&MAE (FC.5810/5811) Extended Functions 4	
		<input type="checkbox"/> Extended Functions 5 (FC.5812)	
		<input type="checkbox"/> Extended Functions 6 (FC.5813)	

Buttons: OK, Cancel, Help

Figure 2. Features Selection

- \_\_\_ 7. On the **Features selection successful message** display:
  - If an error is reported,
    - Note message and code, click on **OK**, then
    - Contact your support.
  - If no error is reported, click on **OK**



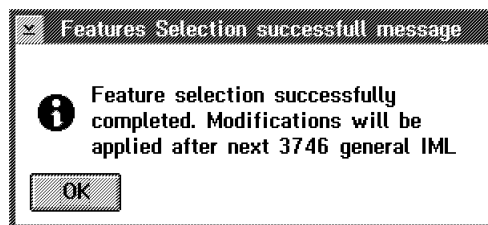


Figure 3. Features Selection Successful Message

## 10.2 Activating the Installed Feature

- \_\_\_ 1. From the **MOSS-E View** screen, double click on the **Controller 3746-9x0** object icon, on which the feature has been installed.
- \_\_\_ 2. Click on **Operation Management**.
- \_\_\_ 3. Double click on **Perform General IML**.

### 10.2.1 Saving Configuration Parameters on Diskette

- \_\_\_ 1. Double click on the **service processor object icon**.
- \_\_\_ 2. Click on **Operation Management**.
- \_\_\_ 3. Double click on **Manage Disks and Databases**.
- \_\_\_ 4. Click on **Save databases on diskette**, and click on **OK**.
- \_\_\_ 5. Insert the **configuration parameters diskette** (1.44 diskette, PN 02L3427) and follow the prompts.
- \_\_\_ 6. When the save is completed, click on **Cancel** to exit from the function.

## 10.3 Returning the Machine to the Customer

- \_\_\_ 1. Inform the Customer or his representative, that the 3746-9x0 is now ready to support the Extended Functions 6.
- \_\_\_ 2. Tell the customer that the traffic can be started.
- \_\_\_ 3. Give the customer one of the Extended Functions 6 password sheets (Form - PN 43P1297).

## 11.0 Test Procedures

No test required.

# 12.0 Field Updating

None.

---

## After Installation (Steps 13-15)

### 13.0 Publications Update

File the second Extended Functions 6 password sheet in the SPIM binder (PN 29H4652).

### 14.0 Parts Disposition

Not applicable.

### 15.0 Machine Records

- Install the new **MACHINE HISTORY** supplied.
- Report installation and quality problems using existing procedures.

**End of instructions.**

